

**Carol Prusa**

# Carol Prusa

## Carol Prusa

American, b. 1956

Carol Prusa (美國·1956年生)以當代大型裝置及銀尖筆繪畫 (Silverpoint Drawing) 著稱·現居住及創作於美國佛羅里達·任教於佛羅里達大西洋大學 (Florida Atlantic University) 繪畫及素描學系。曾獲選為 2012 棕櫚灘郡 Ubertalli 獎的傑出藝術家·作品被 11 間美國博物館永久收藏·包括：邁阿密藝術博物館 (Miami Art Museum)、羅德岱堡美術館 (Museum of Art – Ft. Lauderdale)、杭特美國藝術博物館 (Hunter Museum of American Art)、美國斯賓塞美術館 (Spencer Museum of Art)、美國密蘇里州 Daum 當代藝術館及美國阿肯色藝術中心。重要展覽經驗包括：2013 年懷俄明大學博物館個展、2009 年美國佛羅里達州帕克藝術博物館 (Polk Museum of Art) 個展、2008 年美國波士頓 DeCordova 博物館展覽、2007 年美國傑克遜維爾當代藝術館 (Museum Of Contemporary Art Jacksonville) 個展及 2007 年美國佛羅里達 Boca Raton 美術館展覽等。

Prusa 擅長使用自十四世紀時期起開始流傳的銀尖筆繪畫技巧在半球體上繪畫鏡像疊合的圖形符號·每一個創作都需要長時間的意志力以及能精準掌握圖形比例的藝術技巧才能完成。銀針筆盛行於文藝復興時期·為鉛筆發明以前所普遍使用的工具·其原理是利用銀製的金屬筆尖在物體表面重複地刻劃紋路·經過氧化後·銀針筆繪畫的刻痕會呈現細緻的圖案。因畫過的痕跡無法拭去·故繪畫時相當著重技巧及功力·如達文西 (Leonardo da Vinci · 1452-1519)、米開朗基羅 (Michelangelo · 1475-1564) 等大師皆曾使用銀尖筆進行創作。

Represented by galleries on both coasts in America and by Bluerider ART in Taiwan, Carol Prusa (US, b.1956) exhibits widely in museums and curated exhibitions. Her work has been supported by fellowships including the Howard Foundation and South Florida Cultural Consortium Fellowships. Her work is in numerous museum collections including the Miami Art Museum, Museum of Art – Ft. Lauderdale, Hunter Museum of American Art, Spencer Museum of Art, Arkansas Arts Center, Daum Museum of Contemporary Art and Telfair Art Museum, among others. Prusa’ s work traveled in the Triennial Exhibition of German and American Artists curated by the American Museum of Arts and Design, NYC, exhibited at the Museum for Angewandte Kunst – Frankfurt and at the Museum of Arts and Design.

Charmed by how physicists think, Prusa’ s current work is an attempt to come to terms with singularities, unboundedness, liminal states and location. Known for large-scale use of silverpoint, recent work consists of acrylic hemispheres and spheres ranging from bowl-sized to five feet in diameter, articulated with intricate silverpoint drawing, deepened with graphite and heightened with white paint on the convex illuminated skin, punctuated by programmed patterns of fiber optic lights, with some work incorporating video.

## Blueríder ART







Prusa 最著名的半球體系列作品由透明樹脂玻璃所製成，表面經過磨砂處理後，便施以銀針筆進行刻畫。爾後再以石墨均勻淋倒於半球體表面，產生的水洗效果使其表面圖樣看似朦朧且帶有霧氣感，柔化了原先銀針筆刻畫的筆觸，深化視覺的可觀性。待石墨乾燥，藝術家以白色顏料再次進行細部描繪，使表層圖案效果更為豐富。最後每件作品輔以多達 600 顆之光纖裝置，利用燈光變換模擬宇宙星空。其創作主題闡述宇宙萬物之哲學理論，透過物理科學及數學模型，影射了現實生活中的組織結構及精神力量，其對稱、繁複精緻的花紋，有著宇宙時空及哲學的神祕、神聖感，創造屬於自己的心靈真實。

“銀針星際 Silver Universe” 為藝術家亞洲首個展，此次預計展出 11 件藝術家創作生涯之經典作品及 2014 全新創作。大型半球體作品，如〈Threshold〉，配合了數百顆光纖裝置，在燈光的明暗與細緻的紋路中，呈現如宇宙中閃爍之星空效果。而小型的球體作品〈Vibrations〉則呈現銀針筆如蟬翼般的細緻線條，窺探心靈與科學世界的神秘力量。觀察 Carol Prusa 的作品，對稱、平衡及反覆的圖騰象徵著東方思想中的曼陀羅，引導觀者在欣賞作品時進入自我內心並感受整個宇宙的和諧運轉，讓作品成為包含了宇宙萬物的冥想來源。觀眾除了能看見從藝術中投射出的宇宙與心靈世界、讚嘆宇宙與哲學的美麗，同時也能成就自身與自然之間的對話。

Like scientists and mathematicians who strive to model emergent behavior, Prusa too yearns to realize a radical vision, one that takes into account the chaotic interactions that are central to formation of the universe and plumb their vital beauty. With this work she join the most advanced dreamers – the artists and scientists who seek to explain our place– those who imaginatively visualize a creative matrix and explore otherworldly possibilities – those who embrace indeterminacy and the fundamentally unstable boundaries between infinitesimal and immeasurable realms.

Bluerider ART's solo exhibition of Carol Prusa's work, “Silver Universe” showcases 11 of her recent pieces over a variety size from both hemispheres and spheres series. With her delicate, otherworldly biomorphic forms, created with such media as silverpoint, graphite, and metal, Prusa has redefined both ancient and contemporary traditions, quieting the digital and enabling the silverpoint technique to compound its visual intensity.



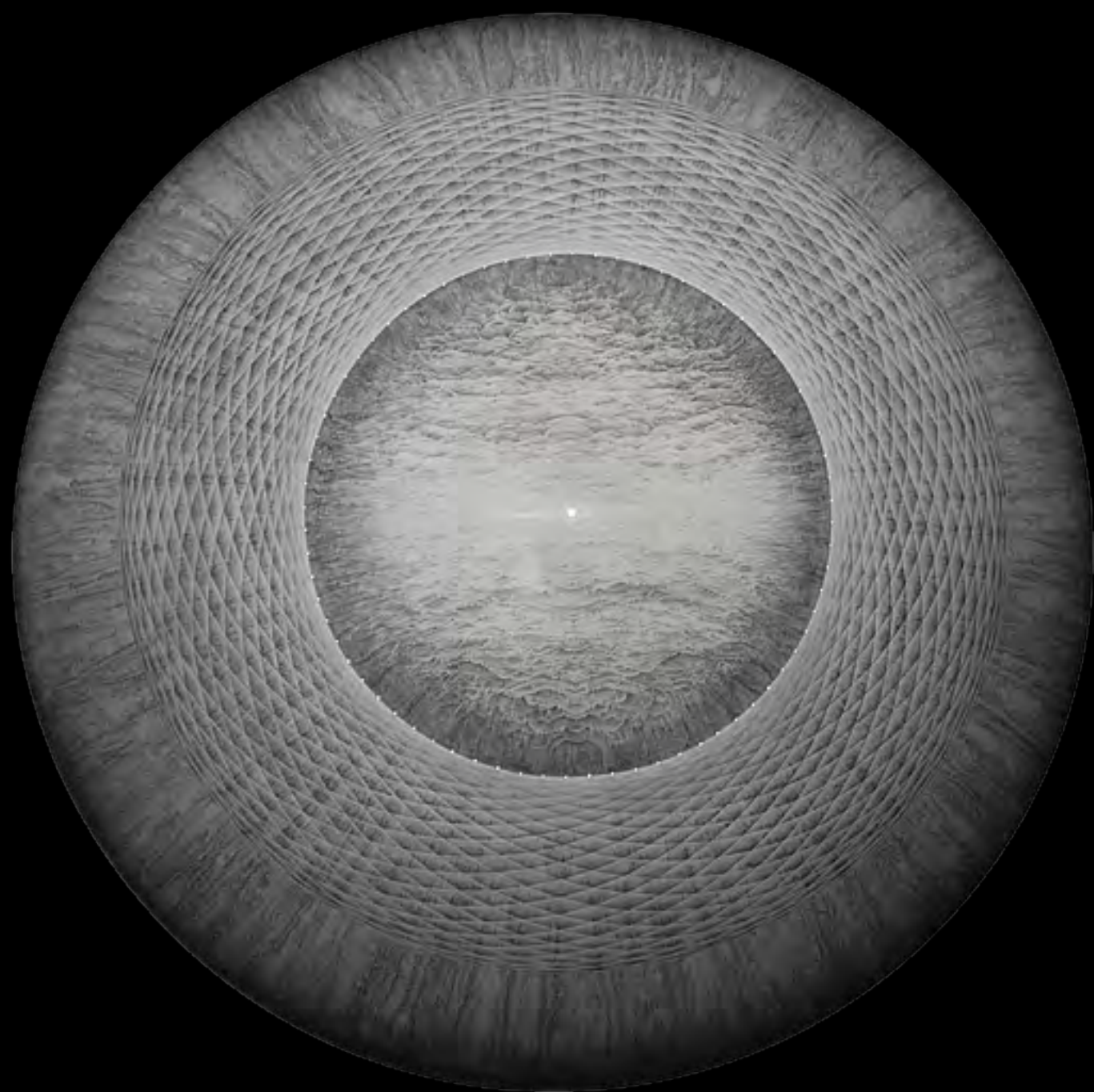
## Potent

2014

26" x 26" x 12" (66.1x66.1x30.5cm)

silverpoint, graphite, titanium white pigment  
with acrylic binder on acrylic hemisphere  
with fiber optics



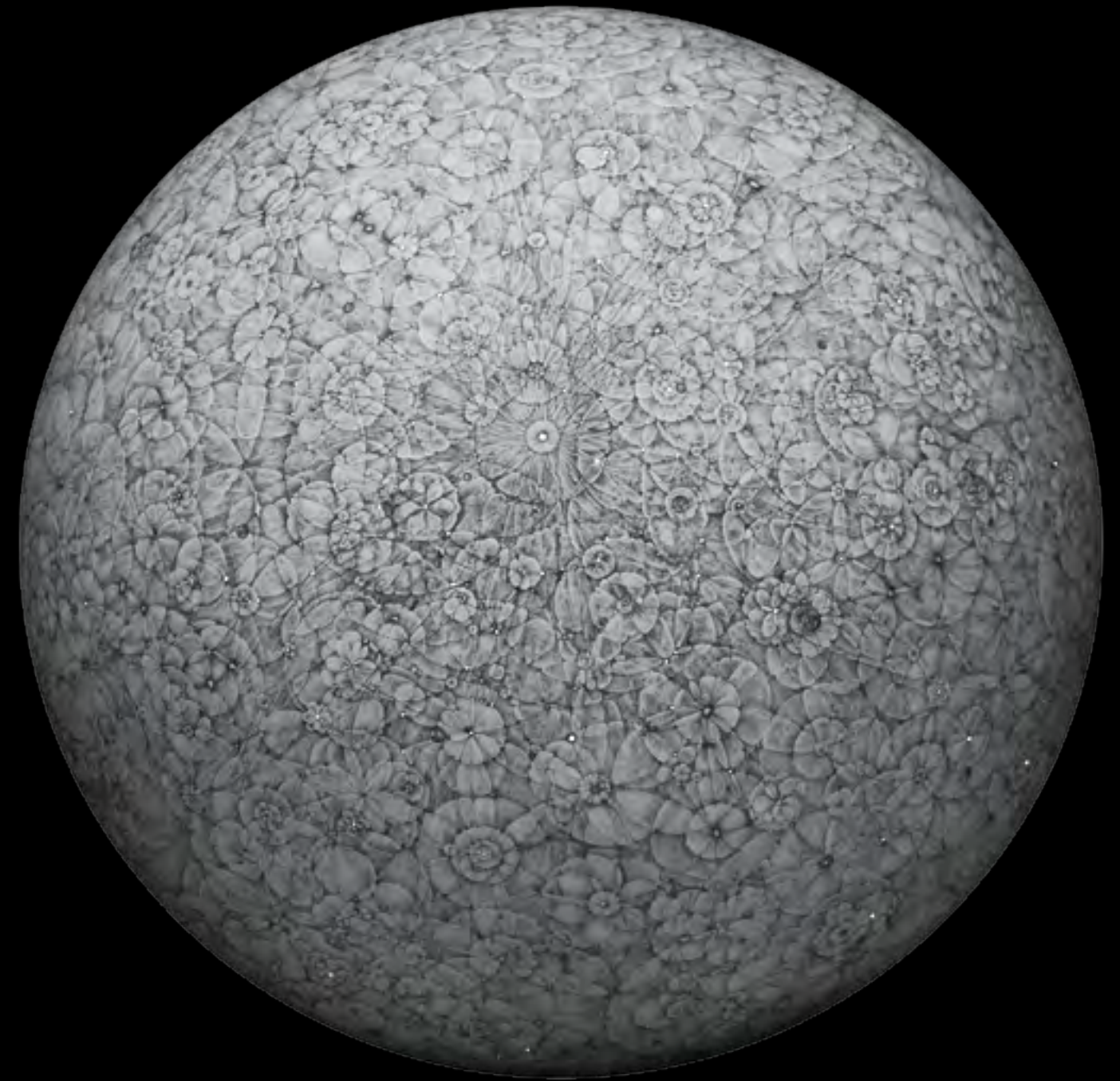


## Sip

2010-14

32" x 32" x 15" (81.3x81.3x38.1cm)

silverpoint, graphite, titanium white pigment  
with acrylic binder on acrylic hemisphere  
with fiber optics



## Latona

2009

32" x 32" x 15" (81.3x81.3x38.1cm)

silverpoint, graphite, titanium white  
with acrylic binder on acrylic  
hemisphere and fiber optics





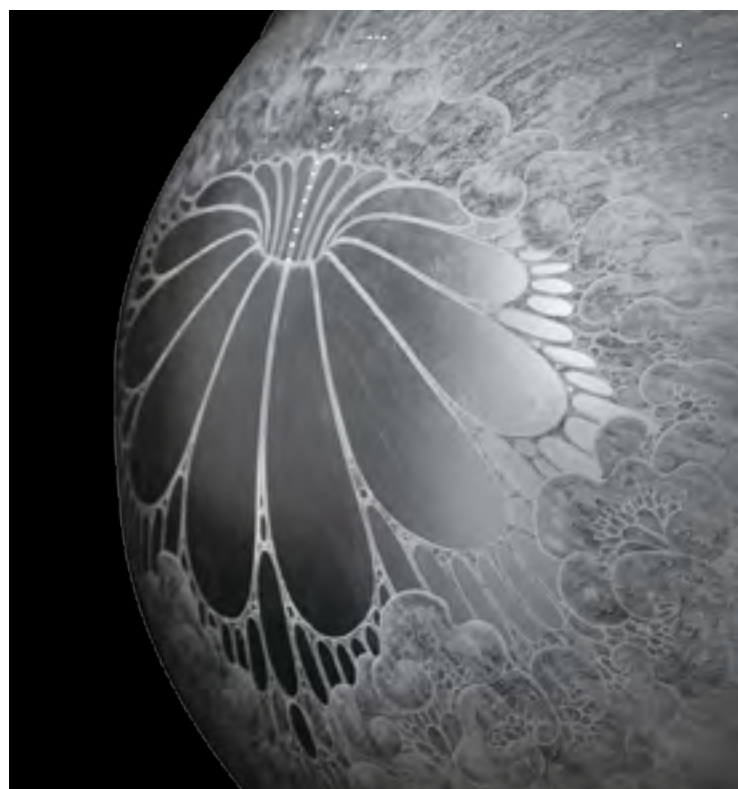
## Threshold

2007

36" x 36" x 18" (91.5x91.5x45.7cm)

Silverpoint, graphite, titanium white pigment  
with acrylic binder on acrylic hemisphere  
with aluminum leaf, fiber optics



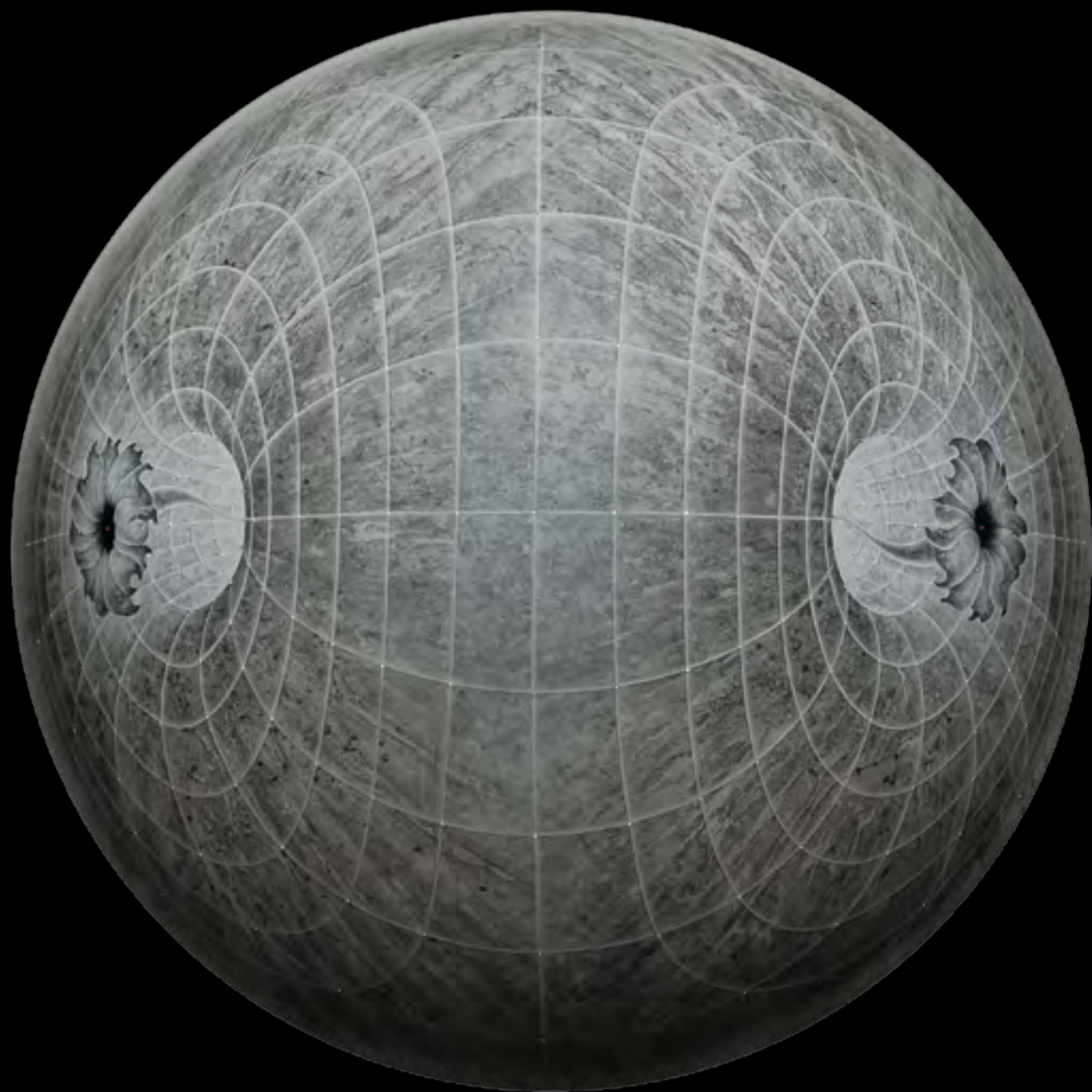


## Emerge

2014

21"x 21"x 6.5" (53.4x53.4x16.5cm)

silverpoint, graphite, titanium white pigment  
with acrylic binder on acrylic hemisphere  
with fiber optics



## Chora

2011

19"x 19"x 7" (48.3x48.3x17.8cm)

Silverpoint, graphite, titanium white pigment with  
acrylic binder on acrylic hemisphere with  
fiber optics (requires electricity)





## Weeps

2011-14  
16" x 16" x 15" (40.7\*40.7\*38.1cm)  
Silverpoint, graphite, titanium white pigment  
with acrylic binder on acrylic sphere with programmed  
internal light that fades on and off, lighting a pattern



## Noein

2011

8" x 8" x 7" (20.4x20.4x17.8cm)

Silverpoint, graphite, titanium white pigment  
with acrylic binder on acrylic sphere  
with aluminum leaf and cut glass







## Vibrations

2014

10"x 10"x 9.5" (25.4\*2.54\*24.2cm)

Silverpoint, graphite, mars black, titanium white  
pigment with acrylic binder on acrylic sphere  
with cut glass

## Differentiation

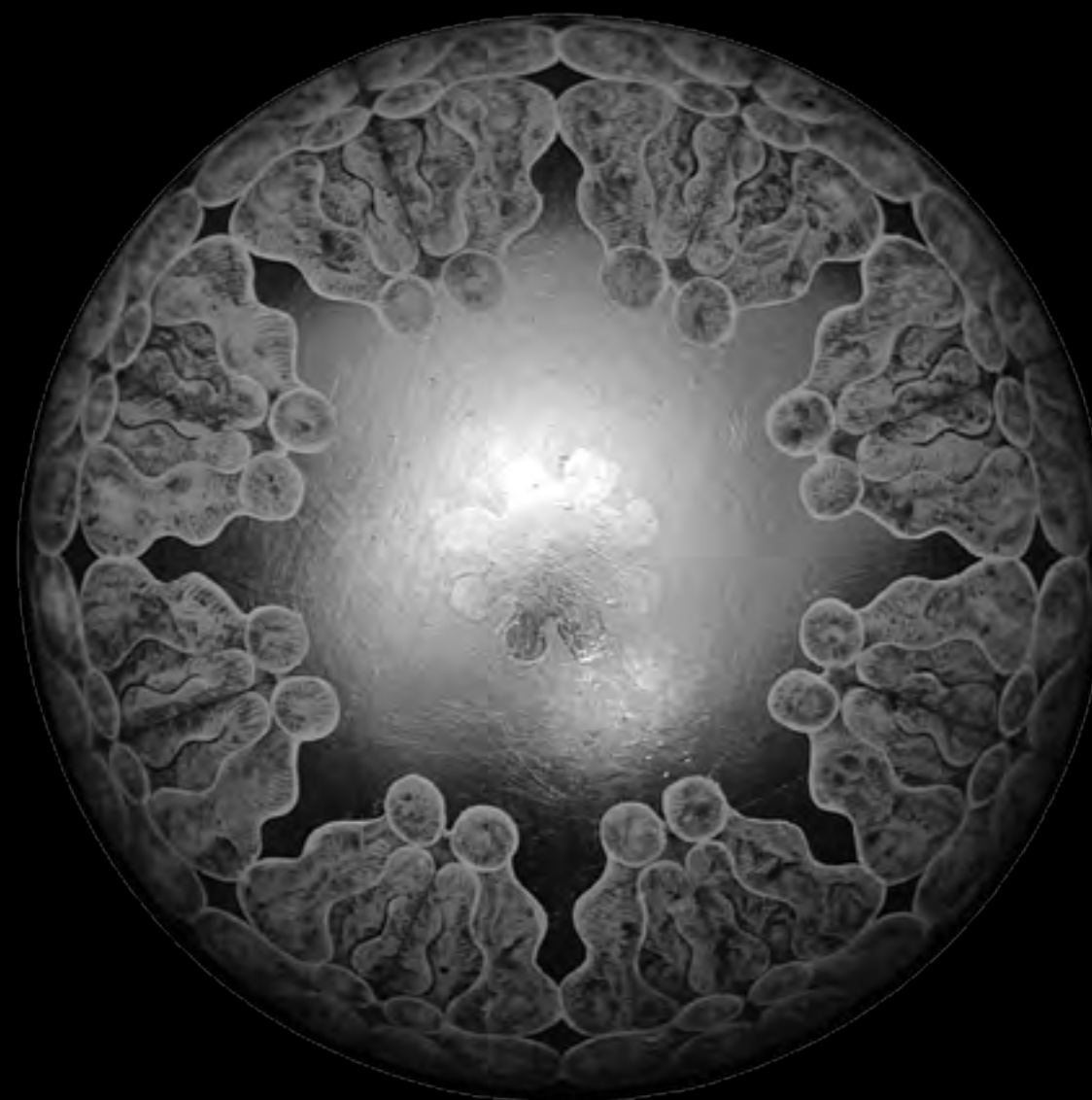
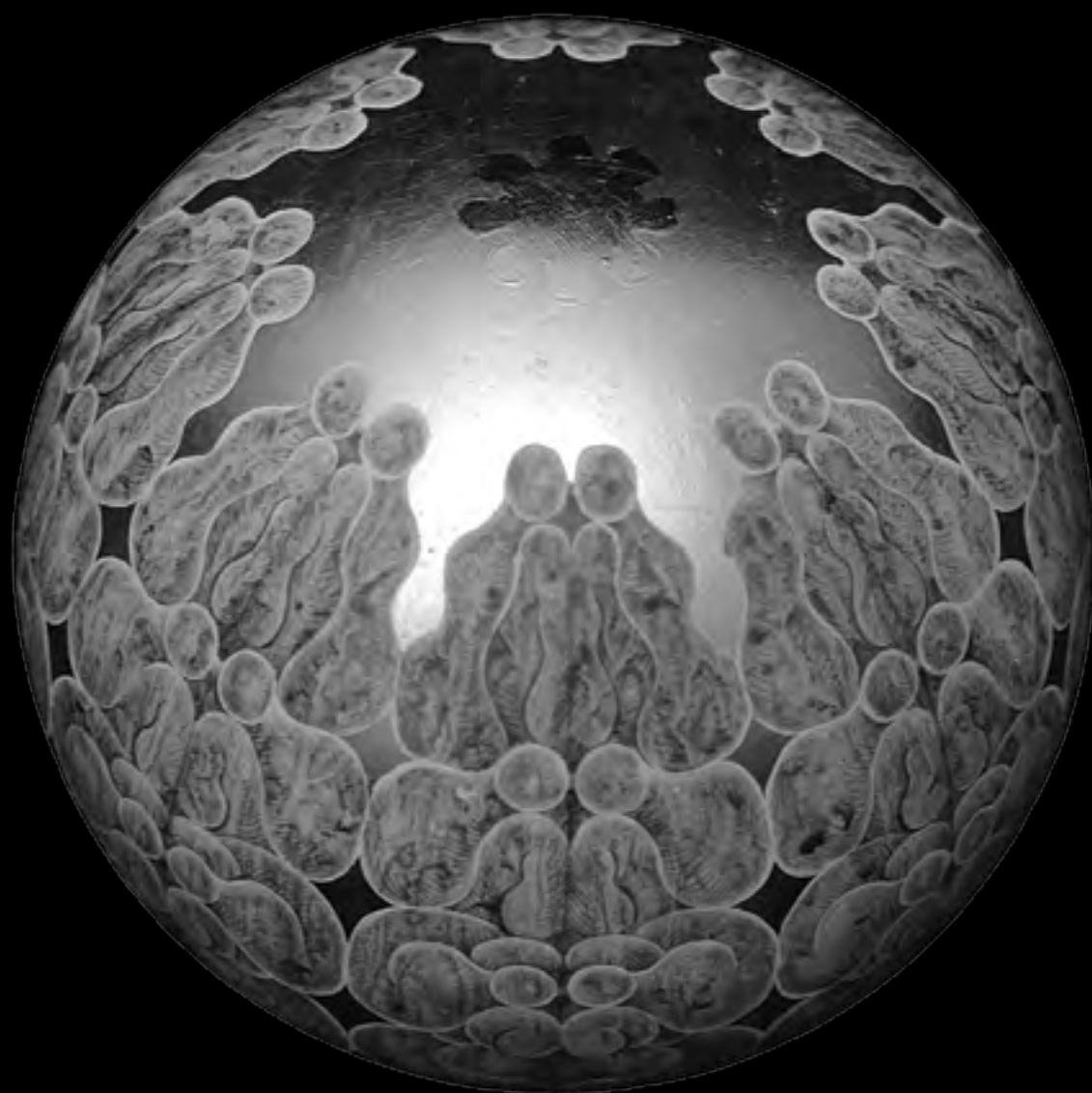
2011

6" diameter

silverpoint, graphite, aluminum leaf, heightened  
with titanium white







## Eight Fold

2014

6" x 6" x 5.5" (15.3x15.3x14cm)

Silverpoint, graphite, titanium white pigment  
with acrylic binder on acrylic sphere  
with aluminum leaf



**Carol Prusa**

American, b. 1956

**Gallery Representation**

Zadok Gallery, Wynwood-Miami  
Jenkins-Johnson Gallery, New York and San Francisco  
Kostuik Gallery, Vancouver, Canada

**Selected Honors**

- 2013 State of Florida Individual Artist Fellowship
- 2013 Southeastern College Art Conference Artist Fellowship Award
- 2013 Art Omi International Artist Residency (summer 2013)
- 2013 Vermont Studio Program, Invited Visiting Artist/Lecturer
- 2013 Brush Creek Artist Residency, Wyoming
- 2012 Ubertalli Award for Outstanding Artist, Palm Beach County (\$2500)
- 2012 Kohler Artist in Industry residency (4 month residency, funded)
- 2011 Scholar of the Year at the Professor rank, Florida Atlantic Univ. (\$5000.00)
- 2010 Nominated for American Artist Fellowship
- 2010 Art In State Buildings Program – public art purchase for the Wellness Center, University of Florida - Gainesville
- 2008 South Florida Cultural Consortium Fellowship for Visual and Media Artists, Regional Juried Application (\$7,500.00)
- 2008 Florida State Artist Grant, State-wide juried application (\$5000.00)
- 2008 Juried into New American Painters quarterly magazine recognizing artists of the southeast by the senior curator of the Miami Art Museum
- 2007 Howard Foundation Fellowship, Brown University
- 2007 National project award (\$25,000)
- 2007 Included in: *Miami Contemporary Artists*, ed., Paul Clemence and Julie Davidow, Foreword by Elisa Turner, Schiffer Publishing Ltd., 2007
- 2007 Art In State Buildings Program – public art contract for the Nanotechnology Building, University of Florida - Gainesville
- 2005 Art In State Buildings Program – public art contract for College of Nursing Building, Florida Atlantic University
- 2002-3 *Corporeal* - Triennial Exhibition of German and American Artists curated by and exhibited at the American Museum of Arts and Design, NYC and the Museum of Angewandte Kunst – Frankfurt

**Recent/upcoming One Person Exhibitions**

- 2014 Sarasota Art Center, Florida (Fall 2014)

- 2014 *Fearful Symmetry*, Zadok Gallery, Miami
- 2013 *Liminal Worlds*, York College, Pennsylvania (Fall 2013)
- 2013 University of Wyoming Museum of Art, Laramie, Wyoming (Spring 2013)
- 2012 *Emergent Worlds*, Urban Institute of Contemporary Art, Grand Rapids, MI
- 2012 *Optic Nerve*, Kohler Art Center, Kohler, Wisconsin
- 2012 *Non-equilibrium*, University of Arkansas, Fayetteville
- 2011 *Domus*, Bernice Steinbaum Gallery, Miami, Florida
- 2010 *Emergence*, Coleman Burke Gallery, Chelsea, NYC
- 2010 *Cosmic Fabric*, EO Art Lab, Connecticut
- 2009 *Successive Approximations*, University of Maine Museum of Art Bangor, Maine
- 2009 *Entanglement*, Bernice Steinbaum Gallery, Miami, Florida
- 2009 *Silver Linings*, Polk Museum of Art, Lakeland, Florida
- 2008 *Spooky Action*, Finestra Artspace, Michigan Ave- Chicago
- 2007-8 *Threshold*, Steinbaum Gallery, Miami
- 2007 *Coherent Structures* - Museum of Contemporary Art, Jacksonville, Florida
- 2006 *Eyebiters* , Bernice Steinbaum Gallery, Miami
- 2006 *New Work*, Carol Prusa, Stetson University, Florida
- 2006 *To Be Us - New Work*, Carol Prusa, Lakatamia Municipalia, Nicosia Cyprus
- 2005 *Silverpoint Painting*, Carol Prusa, Arkansas Arts Center, Little Rock Arkansas
- 2005 *Recent Work*, Carol Prusa, Steinbaum Gallery, Miami, Florida

**Recent Curated Exhibitions**

- 2014 *Encyclopedia of Fernal Affairs*, Vargas Contemporary Museum, Manila, Philippines
- 2014 Selected Artists from South Florida, Frost Museum of Art, FIU, Miami, Florida
- 2013 Selected Artists, Hunter Museum of American Art, Chattanooga, Tennessee
- 2013 *Gram Selects*, Grand Rapids Art Museum, Grand Rapids, MI
- 2013 *Standing on the Bones*, University of Tennessee Downtown Gallery, Knoxville, TN
- 2012 *Empire of Things*, Spencer Museum of Art, University of Kansas
- 2012 *Modern and Contemporary Art from the Telfair, Jepson Center’ s Steward Gallery*, Telfair Art Museum, Savannah, Georgia
- 2012 Winter Salon, Jenkins Johnson Gallery, San Francisco
- 2012 *The Abstract Universe*, Maloney Art Gallery, Morristown, New Jersey
- 2012 *Woman to Woman*, Bakehouse Art Center, Miami
- 2011 *Full Fathom Five*, Jenkins-Johnson Gallery, Chelsea, New York
- 2011 *Seeing is Knowing: The Universe*, Carleton College, Northfield, Minnesota
- 2011 *Believe it or Not*, Dunedin Fine Art Center, Florida
- 2011 *Green House*, Bernice Steinbaum Gallery, Miami
- 2011 *Silver Linings*, Chautauqua Art Center, Chautauqua, New York
- 2011 *Silver*; Points of Departure, Tinney Contemporary, Nashville, Tennessee
- 2011 Exhibit featuring works from Renowned Private Collections, curated by Gean Moreno Ritz Carlton Residences, Singer Island, Florida
- 2010 *Art Miami*, Basel-Miami, Miami, Florida
- 2010 *Between Here and There: Contemporary Art from the Permanent Collection*, Miami Art Museum, Miami. Curated by Peter Boswell, Senior curator.
- 2010 *Metaphysical Materiality*, Tinney Contemporary Gallery, Nashville. Essay by Peter Frank
- 2010 *Redefining Drawing*, Kostuik Gallery, Vancouver – For Drawn 2010 Vancouver, curated by Rachel Rosenfield Lafo
- 2010 *Metaphysical Materiality*, Georgia State University, Atlanta
- 2010 *Luminous Lines*, Scripts College, California. Curated by Margaret Mathews-Berenson
- 2010 *Florida Contemporary Artists*, Naples Museum of Art , Naples, Florida
- 2009 *Starry Messenger: Galileo's Vision in the 21st Century Art*, Louisiana Museum of Art and Science, Baton Rouge
- 2009 *Whitespaces*, Mordes Collection, West Palm Beach, Florida
- 2009 *Set to Manuel*, Girl’ s Club Collection /Bishop-Good, Ft. Lauderdale



2009 *Recent Acquisitions*, Miami Art Museum, Miami  
2009 Five-person exhibition, Kentler International Drawing Space, New York  
Curated by Margaret Mathews-Berenson and Susan Schwalb  
2009 Five-person exhibition, Connecticut College, New London, CT  
Curated by Margaret Mathews-Berenson and Susan Schwalb  
2009 Silverpoint Artist Exhibition, Evansville Art Museum, Indiana  
2009 *With You I Want To Live*, Museum of Art – Ft. Lauderdale, Florida  
2009 *Painters not Painting*, Rutgers Art Gallery, Camden, New Jersey  
2008 *Grey*, Miller-Block Gallery, Boston, Massachusetts  
2008 *Drawn to Detail*, DeCordova Museum, Lincoln, Mass. (outside Boston)  
2008 Consortium Fellowship exhibition – Ft. Lauderdale Art Museum  
2008 *Shades of Grey* (four-person exhibition)  
Mark Scala, Curator, Frist Center for the Arts, Nashville, Tennessee  
2008 *Aesthetics and Values 2008*  
Florida International University Library, Miami, Florida  
2007 *Homegrown Southeast 2007*  
Southeastern Center for Contemporary Art, Winston-Salem, NC  
2006 *The Luster of Silver: Contemporary Metalpoint Drawings*  
Curated by Anne Gochenour, Telfair Museum of Art, Savannah, Georgia  
2006 *Showtel* – Curated by Kara Walker-Tome, Hotel Biba, W. Palm Beach  
2006 *Think Warm: Miami Draws for You*, Tomio Koyama Gallery  
Shinkawa 1-31-6-1F, Chuo – ku, Tokyo, Japan, Jan. 21 - Feb. 10

Public Collections

Hunter Museum of American Art / 50” hemisphere with video, *Pentacle*  
University of Wyoming Museum of Art / 30” hemisphere, *Chaosmos*  
Kohler Art Center – Wisconsin / elliptical panel, *Aglaophonos*  
Kohler Company – Wisconsin / Ceramic piece with silverpoint and fiber optics – *Sol Niger*  
University of Kansas – Spencer Museum of Art / 16” sphere, *Navel*  
University of Florida – State Public Art Purchase, Wellness Center / Gainesville, Florida – Multiverses, 40” circular panel painting  
University of Florida – State Public Art Commission, NIMET Nanotechnology / Gainesville, Florida - Incubator, six installed dome paintings  
Evansville Museum of Art and Science - Evansville, Indiana / Bud, 48” x 24”  
Polk Museum of Art – Lakeland, Florida / Wreath, 48” x 84”  
Miami Art Museum / Adaptation – 5panel collaborative project; Julie Davidow and Carol Prusa  
U.S. Embassy, Nicaragua / Between, 48” x 24” , To Be You, 48” x 24” , Between, 48” x 24”  
Daum Museum of Contemporary Art / Sedalia, Missouri - What Connects Us Now? 48 x 84”  
Telfair Museum / Savannah, Georgia - Silent Pregnancy, 48 x 84”  
Florida Atlantic University – State Public Art Commission, Boca Raton, Florida / Cradle, 56 installed circular panel paintings  
Arkansas Arts Center, Little Rock, Arkansas / Weep Holes, 48” x 84”  
Museum of Art - Fort Lauderdale / Fertile Uncanny, 48 x 84”  
Bienes Center for the Literary Art, Broward County Library, Ft. Lauderdale, Florida / Cuts, Snarls and Snags (artist book)  
Catherine Smith Gallery, Appalachian State University, Boone, North Carolina / Mother, Daughter and ..., egg tempera, gold leaf on panel, 14 " x 29"  
University of Oregon Special Collections, Eugene, Oregon / Cuts, Snarls and Snags – Artist book

Invited Lectures

2014 Invited Lecturer, Carnegie-Mellon University Symposium on Drawing  
2013 Memphis College of Art, Memphis, Tennessee

2013 Women in the Visual Arts Florida Chapter, invited lecturer  
2013 York College of Pennsylvania, invited lecturer  
2013 University of Wyoming , invited lecturer  
2013 Vermont Studio Program, invited lecturer and critiquer  
2012 University of Cape Town, Dept. of Visual Arts, South Africa  
2012 University of Arkansas  
2010 University of Florida Marston Lectureship in the Visual Arts  
2010 Lecture; Historic Materials and Methods at the Norton Museum of Art, Florida  
2009 Presented at Painting Symposium, Rutgers, New Jersey  
2008 Lecture, Museum of Art Ft. Lauderdale/Nova Southeastern University  
2008 Recent Work of Carol Prusa, New York City Studio Program – Parsons  
2008 Studio visit, Norton Museum of Art Internship Program  
2007 Coherent Structures (lecture), Museum of Contemporary Art, Jacksonville, Florida  
2007 Recent Work of Carol Prusa, Museum of Art, Boca Raton, Florida

Selected Exhibition Catalogs/publications/books

2013 Carol Prusa: Liminal Worlds, exhibition catalog, York College of Pennsylvania  
2012 Dorothea Burns; The Luminous Trace: Drawing and Writing Drawing in Metalpoint, Archetype Publications, London, 2012 (two-page color spread focused on my work)  
2012 Strange Attractors, Curated by Kardambikis, Khaira, Silver, Published by Encyclopedia Destructica (270 page book, ISBN: 978-0-9848434-0-4)  
(four-page color spread focused on my work)  
2012 The Drawing Season, John Michael Kohler Arts Center, Sheboygan, WI (catalog)  
2010 Emergence, Coleman Burke Gallery, Chelsea, NYC (catalog)  
2010 Metaphysical Materiality, Georgia State University, Atlanta (catalog)  
2010 Luminous Lines, Scripts College, California. Curated by Margaret Mathews-Berenson (catalog)  
2009 With You I Want To Live, Ft. Lauderdale Museum of Art (catalog)  
2008 Drawn to Detail, DeCordova Museum, Lincoln, Mass. (outside Boston) (catalog)  
2008 Shades of Grey (four-person exhibition)  
Mark Scala, Curator, Frist Center for the Arts, Nashville, Tennessee (catalog)  
2008 Aesthetics and Values 2008  
Florida International University Library, Miami, Florida (catalog)  
2008 Consortium Fellowship exhibition – Ft. Lauderdale Art Museum (catalog)  
2007 Coherent Structures, Museum of Contemporary Art, Jacksonville, FL (publication)  
2007 Drawn In / Drawn Out, Ritter Gallery  
Florida Atlantic University, Boca Raton, Florida (publication)  
2006 The Luster of Silver – Contemporary Metalpoint Drawings, Telfair Museum of Art, Savannah, Georgia, essay by Holly Gochenour, Curator (publication)  
2005 Silverpoint by Carol Prusa, essay by Anne Gochenour, curator, Arkansas Art Museum, Little Rock, Arkansas (publication)  
2005 Complement –South Florida Art Center exhibition, Miami Beach, Florida (catalog)  
2005 To Be Many – exhibition essay by Dominique Nahas, printed by Bernice Steinbaum Gallery, Miami, Florida (publication)  
2004 Carol Prusa – Recent Work, J. Johnson Gallery, Jacksonville, Florida, essay by Dominique Nahas (catalog)  
2003 Corporal Identity – Body Language, exhibition catalog, Museum of Arts and Design, Ninth Triennial for Form and Content, New York City, New York (catalog)  
exhibition catalog for Triennial Exhibition of German and American Artists curated by and exhibited at the American Museum of Arts and Design, NYC and the Museum of Angewandte Kunst – Frankfurt  
2003 New Work, Miami-Dade Community College, essay by Gean Moreno (catalog)

# Carol Prusa

Published by  
**Bluerider ART Corp.**

T : +886 2 2752 2238  
F : +886 2 2752 2219  
www.blueriderart.com  
Headquarter : 10F., No.25-1, Sec. 4, Ren' ai Rd., Taipei City 106, Taiwan  
總部 : 106 台北市大安區仁愛路四段 25-1 號 10 樓

Gallery : 9F., No.25-1, Sec. 4, Ren' ai Rd., Taipei City 106, Taiwan  
仁愛館 : 106 台北市大安區仁愛路四段 25-1 號 9 樓

Publication Date : October 2014

出 版 : 中芝國際股份有限公司  
出版日期 : 民國 103 年 12 月  
序 號 : P009

ISBN : 978-986-89872-7-2

All Rights Reserved © Bluerider ART Corp.  
版權所有 翻印必究



**Bluerider** ART